

ITEM DETAILS - Volvo A40F

Tuesday, February 14, 2017

DETAILED EQUIPMENT INFORMATION

A qualified Ritchie Bros. employee collected detailed equipment information and performed functional tests on the key components of this asset.

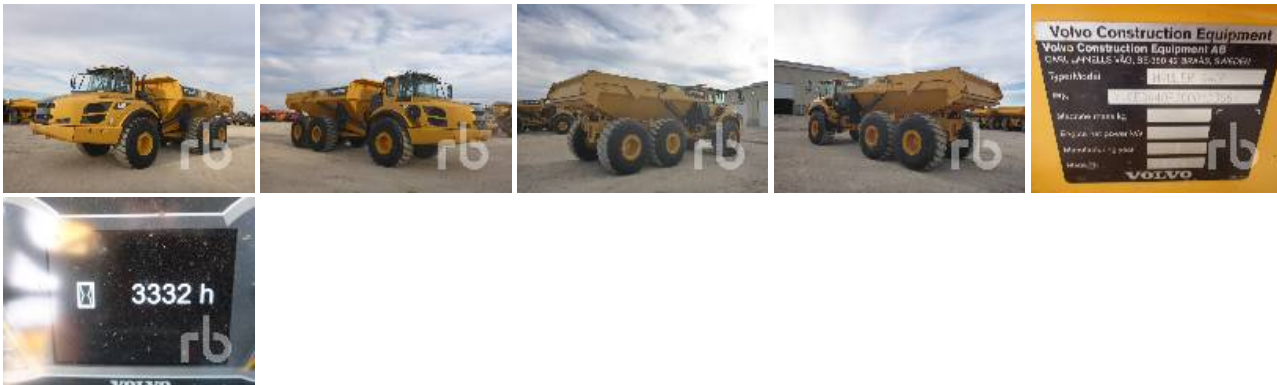
General Description

Inspector Name: JG
 Sale Number: 2240006
 Sale Location: FTW - Volvo Sale, TX, USA
 Sale Date: Dec 31, 2017
 Owner Code: V89
 Schedule A: 48
 Schedule A Modifier: 0
 Sequence Number: 0
 Lot: 48
 Title In Hand: No
 In Yard: Yes
 In Yard Date: 2016-12-29
 Warranty Eligible: No
 Manufacturer: Volvo
 Model: A40F
 Ejector: No

Axle Configuration: 6x6
 Asset Type: Articulated Dump Truck
 Asset Type Free Form: Articulated Dump Truck
 Serial Number or VIN: VCE0A40FJ00012306
 S/N Location: rp
 Serial Number Checked: Yes
 Unused: No
 Glidered: No
 CE: No
 Condition

Tires / U/C %: 70%
 Hrs/Mil/kms: 3332 hrs
 Overall Condition for Age: Good

R&R Required: No
 Comes With: D16H 6 cyl, 469 hp, A/C, rear view camera, tailgate, 29.5R25
 Model Description: 6x6



Operator Station

Retarder: No
 A/C: Yes
 Rear View Camera: Yes

Emergency Steer: No



Engine

EPA: No

Engine

Model: D16H
Cylinders: 6 cyl
Horsepower: 469 hp



Drive Train

No data.



Undercarriage/Suspension

Tire Size: 29.5R25

Tire Manufacturer: Bridgestone



Body Details

Heated Box: No

Heated Tray: No

Liner: No

Tailgate: Yes





Accessories

Auto Lube: No



Functionality Tests

Starts: Yes
 Drives Forward: Yes
 Drives Backward: Yes
 Brake Pedal Functions: Yes

Dump Box Hydraulics Function: Yes
 Articulation Hydraulics Function: Yes

Dimensions

Width: 11 ft 3 in

Length: 37 Ft
 Height: 12 ft 1 in

Supporting Documents

Registration Details

Service Records In Office: No

Former Registration: No

Manuals Available In Office: No

R&R

No data.

DISCLAIMER**General**

The Detailed Equipment Information is limited in scope, and Ritchie Bros. Auctioneers has not inspected any aspects or components of the equipment other than those expressly set forth herein. Unless expressly stated, we make no representations or warranties, express or implied, concerning the equipment or its components, including without limitation any representations or warranties concerning functionality, conformity or compliance with any safety standard or requirement of any applicable authority or regulatory body, fitness for any particular purpose, or merchantability. You are strongly advised to perform your own detailed inspection of the equipment prior to bidding.

Functions

Equipment is not tested under load. We make no representation or warranty that equipment is operating in accordance with manufacturers' specifications. No inspection has been performed with respect to any functionality aspect other than those expressly included herein. Only select photos have been provided for individual undercarriage components, and may not be indicative of the condition of the entire undercarriage as a whole.

Dimensions

Measurements are given as an estimate only. Actual loaded dimensions may vary based on truck/trailer height and the loaded machine configuration/position. It is the buyer's responsibility to measure all loads before leaving our auction site to ensure the load is safe for transport. All measurements should be verified by the buyer. DO NOT rely on these measurements for transportation purposes